



# GMT MONTHLY MEMBERSHIP PROGRESS REPORT

Results as of: 5/31/2020

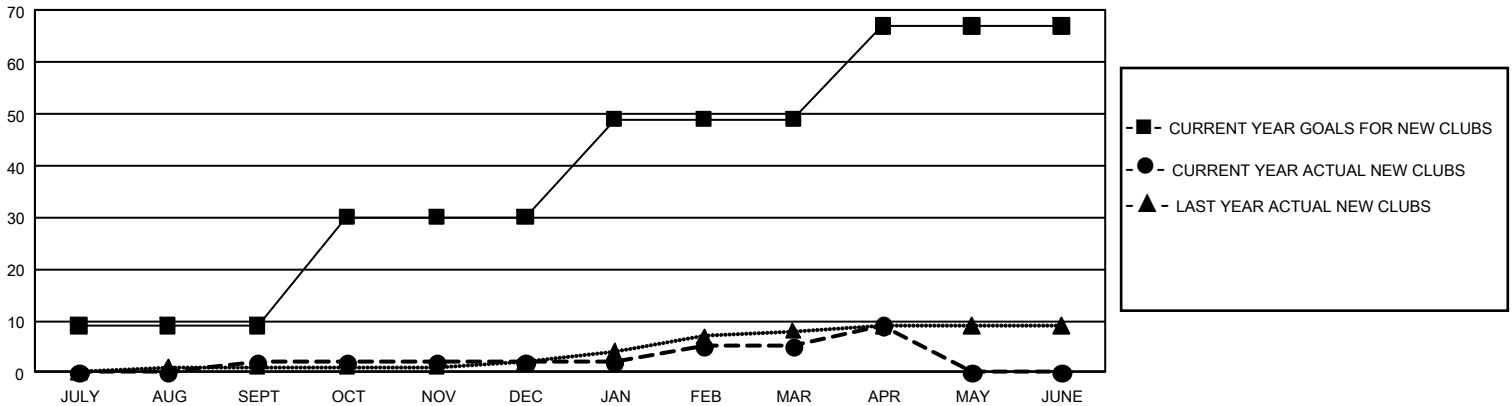
## GAT Constitutional Area 5 - Japan

REPORT DOES NOT INCLUDE CLUBS IN UNDISTRICTED AREAS.

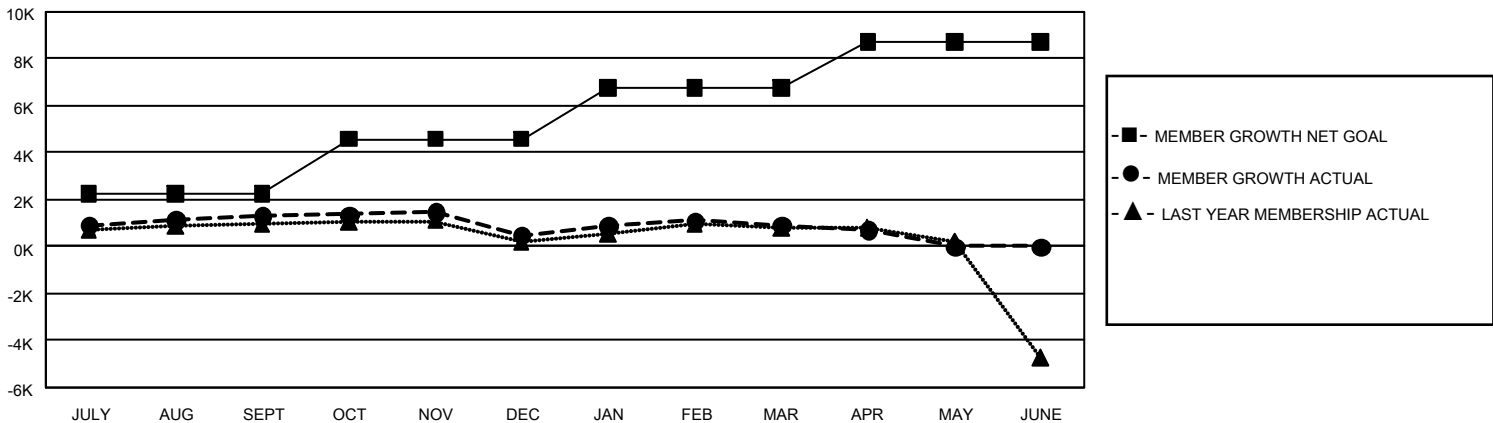
Clubs			
RESULTS FOR 2019-2020			
QUARTER	NEW CLUB GOAL	NEW CLUBS	DROPPED CLUBS
JULY/AUG/SEPT	27	2	6
OCT/NOV/DEC	63	0	5
JAN/FEB/MAR	57	3	7
APR/MAY/JUNE	54	4	1

Members			
RESULTS FOR 2019-2020			
QUARTER	MEMBER GROWTH NET GOAL	MEMBER GROWTH ACTUAL	DROPPED MEMBERS ACTUAL (including transfers)
JULY/AUG/SEPT	6,690	3,323	1,808
OCT/NOV/DEC	7,059	1,569	2,332
JAN/FEB/MAR	6,516	2,010	1,489
APR/MAY/JUNE	5,844	440	645

GOALS AND ACTUAL NEW CLUBS CUMULATIVE



GOALS AND ACTUAL MEMBERS CUMULATIVE



DROPPED CLUBS: 19	2,046 CLUBS OF 2,971 ADDED 1 OR MORE NEW MEMBERS	<u>GENDER DISTRIBUTION</u>	
<u>DROPPED MEMBERS</u>		MALE	84,347 (75.68%)
DECEASED	706	FEMALE	27,103 (24.32%)
CLUB CANCELLED	120	TOTAL FAMILY UNIT MEMBERS 41,580	
OTHER	5,447	FAMILY MEMBERS PAYING HALF DUES 22,833	
TOTAL	6,273		

[CLICK HERE FOR CUMULATIVE MEMBERSHIP DATA](#)